

CAP MOUNT:

1. THE CAP MOUNT IS DESIGNED FOR THE BELOW DECKING.
2. THE CAP SKIRT GOES OVER THE OUTSIDE OF THE BASE SLEEVE.
3. IT SETS JUST BELOW THE BOTTOM OF THE DECKING MATERIAL TO ALLOW WATERPROOFING.

MFG Part #	Product Description	Fastening Requirements		Weight
		Type & Size	Total Per Part	
HTB-SADJ/FM - 3", 6" OR 9"	3", 6" OR 9" HIGH FLUSH MOUNT	SDS Screw - 1/4" x 2 1/2"	32	85#
HTB-SADJ/CM - 3", 6" OR 9"	3", 6" OR 9" HIGH CAP MOUNT	SDS Screw - 1/4" x 2 1/2"	32	85#
HTB-SFM/CM	HEIGHTS TO BE SPECIFIED	SDS Screw - 1/4" x 2 1/2"	32	85#

3" HIGH ADJUSTS FROM 3 1/2" TO 6 1/2" ABOVE TOP OF BEAM.
6" HIGH ADJUSTS FROM 6 1/2" TO 9 1/2" ABOVE TOP OF BEAM.
9" HIGH ADJUSTS FROM 9 1/2" TO 12 1/2" ABOVE TOP OF BEAM.

MFG Part #	Product Description	Fastening Requirements		Weight
		Type & Size	Total Per Part	
ALT HTB-ADJ/FM - 4" OR 6"	3 1/2" OR 9" HIGH FLUSH MOUNT	SDS Screw - 1/4" x 3"	16	90#
ALT HTB-ADJ/CM - 4" OR 6"	3 1/2" OR 9" HIGH CAP MOUNT	SDS Screw - 1/4" x 3"	16	90#
ALT HTB-FM/CM	HEIGHTS TO BE SPECIFIED	SDS Screw - 1/4" x 3"	16	90#

3 1/2" HIGH ADJUSTS FROM FLUSH TO 5"
9" HIGH ADJUSTS FROM 5 1/2" TO 10 1/2" TO 5"

FLUSH MOUNT:

1. THE FLUSH MOUNT CAP HAS THE SKIRT GOING TO THE INSIDE OF THE SLEEVE OF THE BASE UNIT.
2. THE SKIRT AND THE SLEEVE GO FLUSH TO THE TOP OF THE PLYWOOD, OR TO THE TOP OF THE CONCRETE OR INSULATION THAT MAY BE ON TOP OF THE PLYWOOD.
3. WHEN THE ROOF IS BEING WATERPROOFED, THE WATERPROOFING GOES TO THE INSIDE OF THE SLEEVE.
4. ONCE THE FINISH PRODUCTS (TILE, JUST MEMBRANE), THE CAP IS SET ON TOP OF THE FINISH MATERIALS.
5. THE PRODUCT NEEDS TO BE TESTED PRIOR TO SETTING. ONCE TESTING IS COMPLETE THE CAP IS SEALED OVER THE FINISH MATERIALS.

NOTE:

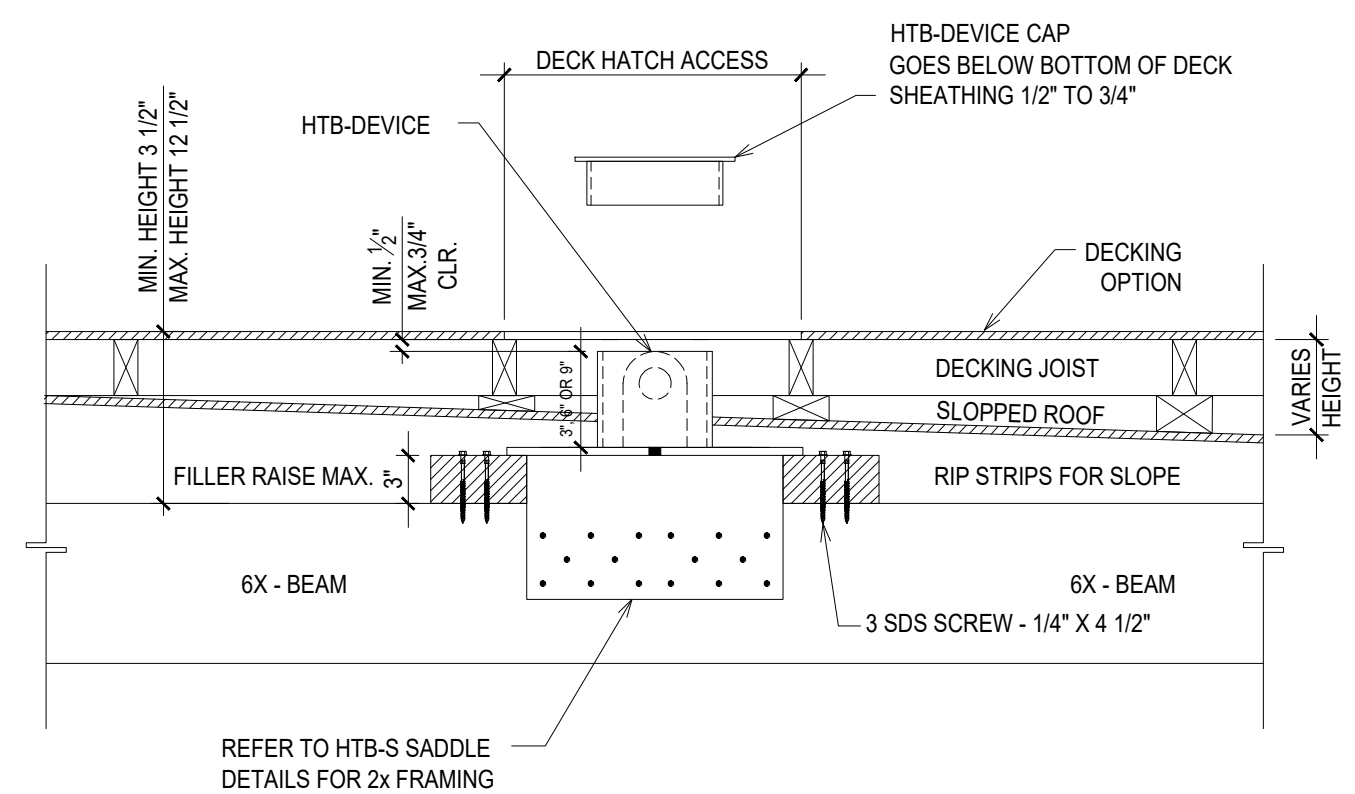
1. HARDY SADDLE ANCHOR FABRICATOR IS TOBIN STEEL, LA CITY FABRICATOR LICENSE #975 ICC-ESR 1822 IAPMO ER# 461
2. HARDY TIE BACK ANCHOR DEVICE HAS BEEN TESTED BY CERTIFIED TESTING AGENCY TO MEET OR EXCEED OSHA AND CALOSHA REQUIREMENTS.



IAPMO ER# 461

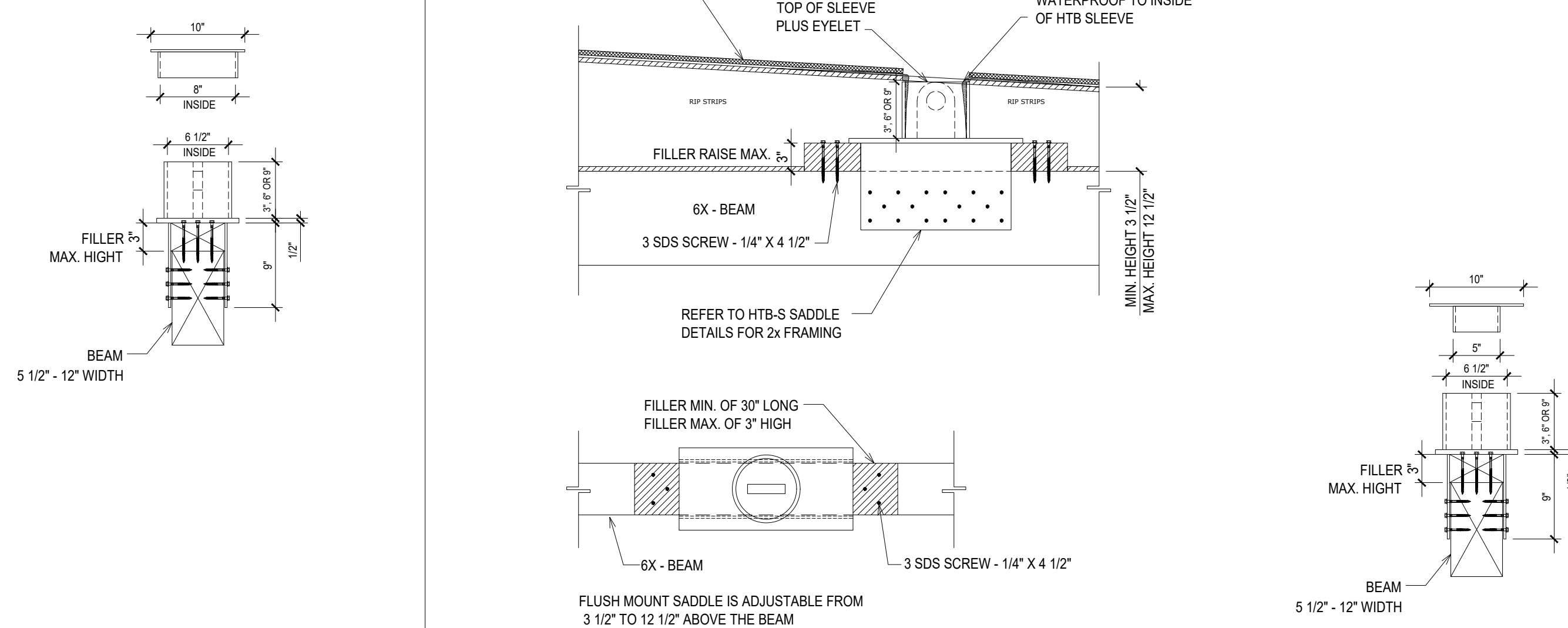
2020 L.A. CITY RESIDENTIAL CODE (LARC)
2020 L.A. CITY BUILDING CODE (LABC)

① HTB-S-ADJ CAP MOUNT

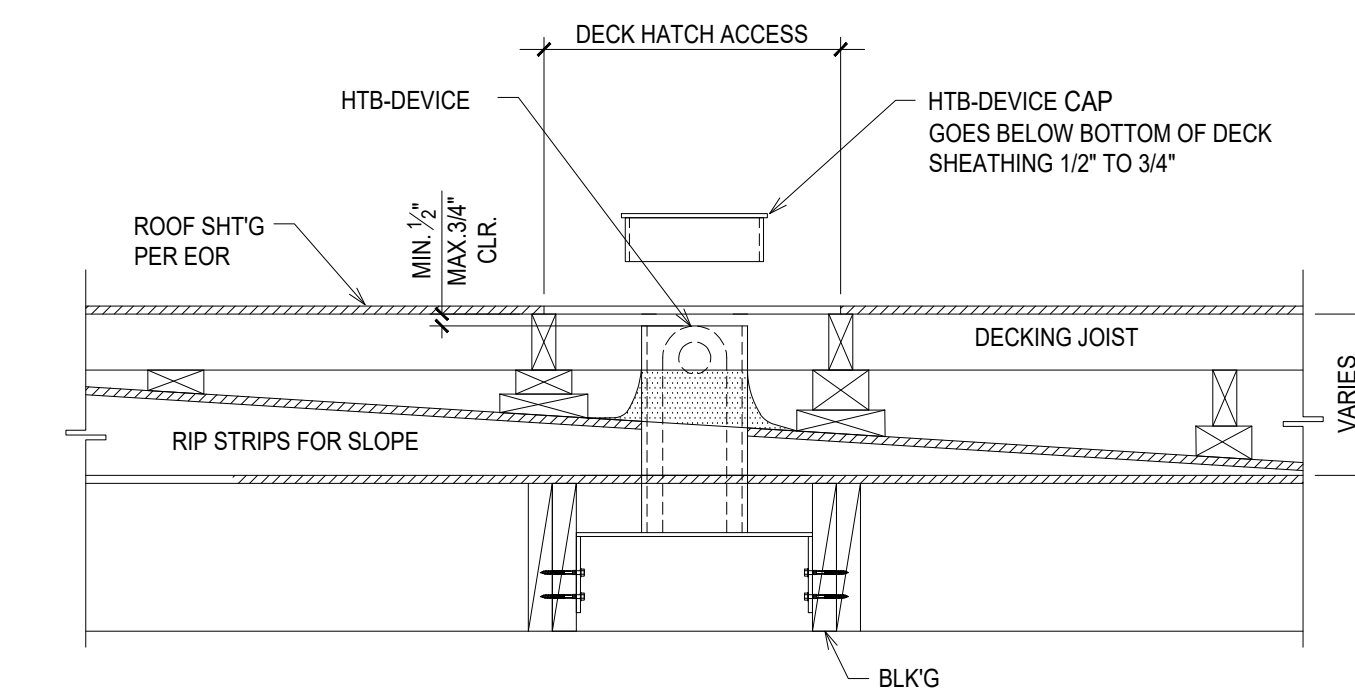


CAP MOUNT SADDLE IS ADJUSTABLE FROM 3 1/2" TO 12 1/2" ABOVE THE BEAM

② HTB-S-ADJ FLUSH MOUNT

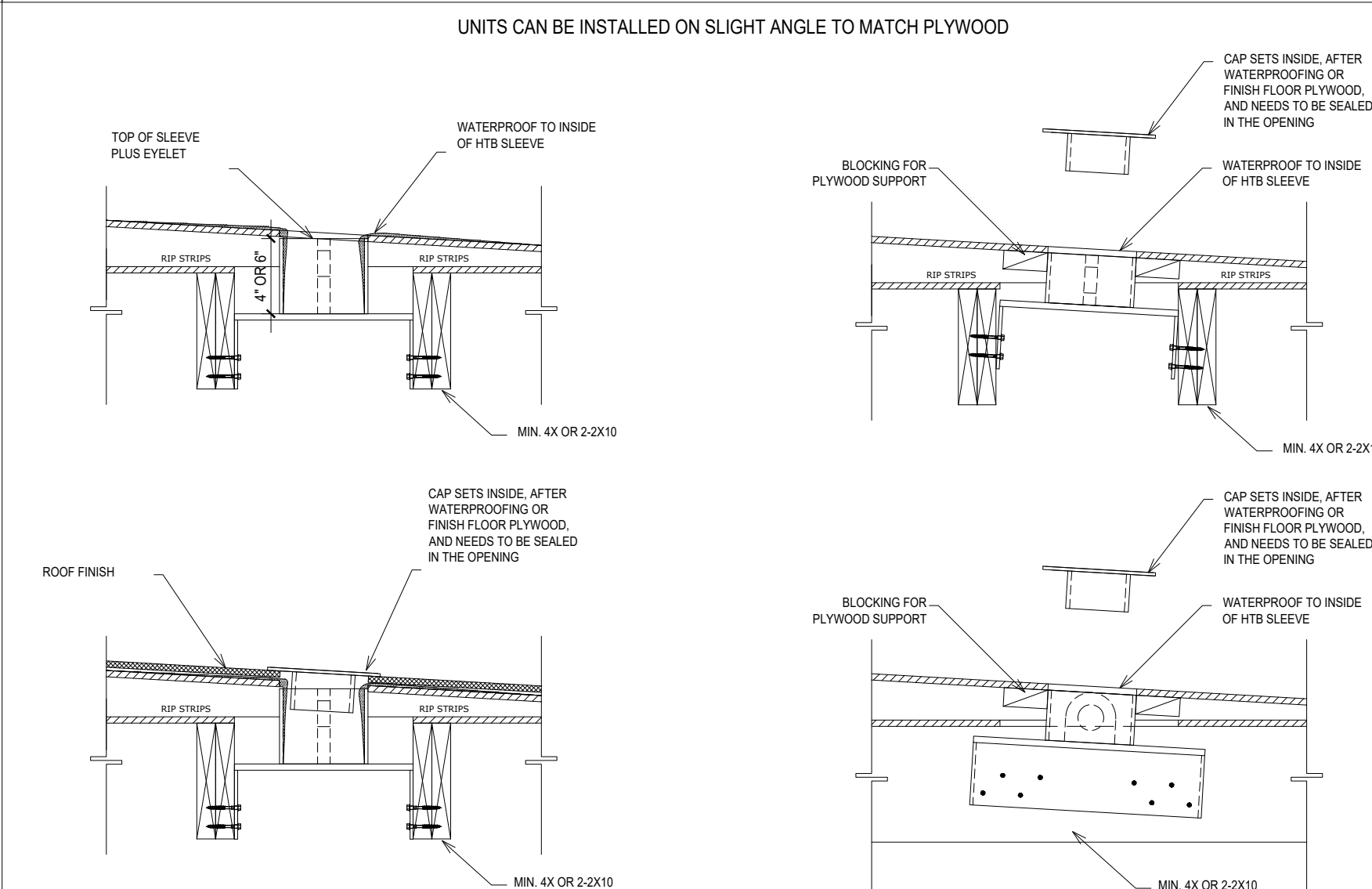


③ ALT HTB-ADJ CAP MOUNT



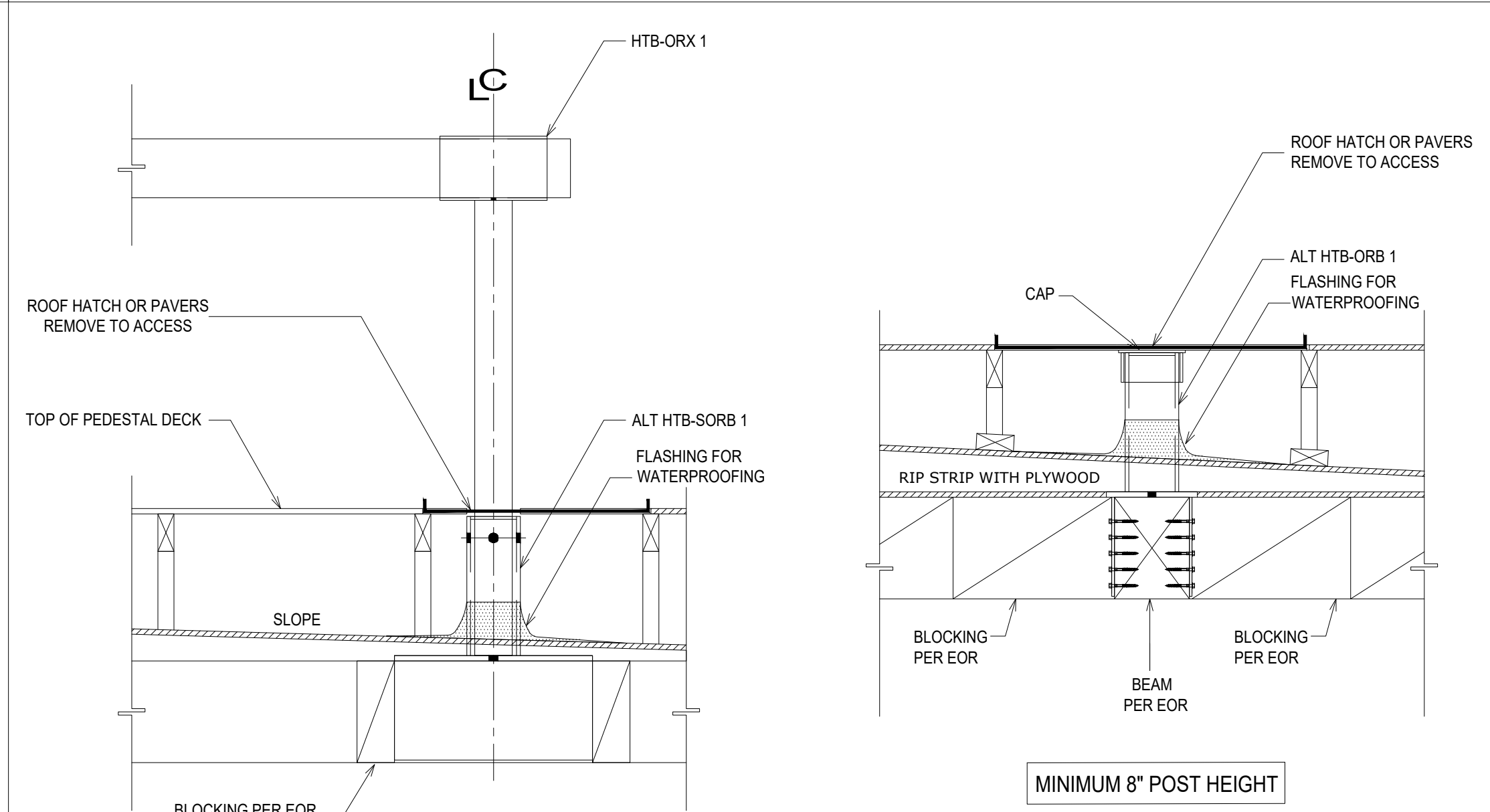
STANDARD POST HEIGHTS OF 3-1/2" & 9"
ADJUSTABLE HEIGHTS ABOVE SHEATHING
3-1/2" POST - FLUSH TO 5"
9" POST - 5-1/2" - 10-1/2"

④ ALT HTB-ADJ FLUSH MOUNT



STANDARD POST HEIGHTS OF 3-1/2" & 9"
ADJUSTABLE HEIGHTS ABOVE SHEATHING
3-1/2" POST - FLUSH TO 5"
9" POST - 5-1/2" - 10-1/2"

⑤ HTB-S-OUTRIGGER CAP MOUNT



DETAILS FOR REFERENCE--EOR TO DESIGN STRUCTURAL ELEMENTS-BEAMS, TRUSSES, BLOCKING, STRAPPING, ETC.

U.S. PATENT NO. 11, 118, 363, B1
U.S. PATENT NO. 10, 053, 878
U.S. PATENT NO. 10, 358, 835, B2

HARDY CAP MOUNT
& FLUSH MOUNT



ISSUE/REVISION	DATE
REV. 1	5-27-22
REV. 2	10-4-22
REV. 3	10-5-22
REV. 4	11-18-22

JOB NO.

SCALE: NOT TO SCALE

DATE: MAY 23, 2022

DRAWING NUMBER

CM-FM

SHEET 1 OF 1