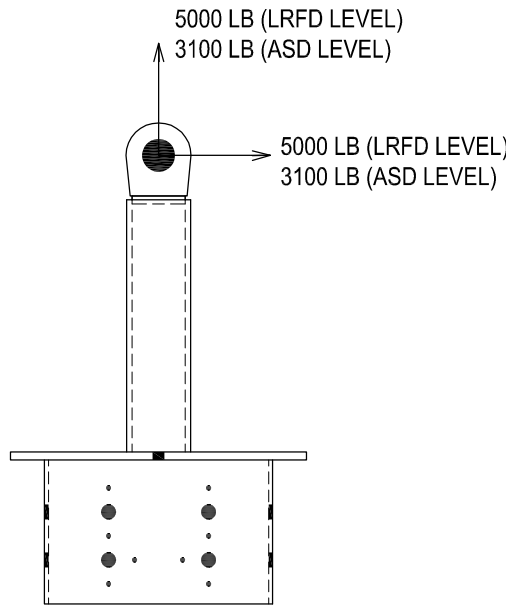


MFG Part #	Product Description	Fastening Requirements		Weight
		Type & Size	Total Per Tie Back	
HTB16	16" Hardy Standard Tie Back	SDS Screw - 1/4"x 3"	24	95#
HTB24	24" Hardy Standard Tie Back	SDS Screw - 1/4"x 3"	32	130#
HTB32	32" Hardy Standard Tie Back	SDS Screw - 1/4"x 3"	40	150#
HTB-CM	Hardy Cap Mount Tie Back	SDS Screw - 1/4"x 3"	32	135#

- FOOTNOTES:
- FOR WOOD SPECIES WITH MINIMUM SPECIFIC GRAVITY OF 0.5, USE SDS PER SCHEDULE TO FILL ALL PROVIDED 5/16" DIAMETER HOLES.
 - IN ALL CASES, 6-A-35 CONNECTORS ARE REQUIRED TO CONNECT STRUCTURAL ELEMENTS WITH 4X BLOCKING AS SHOWN IN THE DETAILS.
 - FOR HTB-32 INSTALLATION, ADD 2-SDWC15600 (IAPMO ER 262); ONE AT EACH SIDE; FROM THE STRUCTURAL MEMBER TO THE END GRAIN OF 4X BLOCKING OR CHANGE BLOCKING AND BEAM TO 4X12 TO ACCEPT 3-A-35 CONNECTORS ON BOTH ENDS OF BLOCKING NEXT TO THE HTB'S.
 - HOLES ARE PROVIDED FOR 7/8" BOLTS TO BE INSTALLED WHEN REQUIRED.

INSTALLATION INSTRUCTIONS:

- INSTALL AFTER COMPLETION OF JOIST, TRUSSES AND RAFTERS.
 - BEST TO INSTALL DURING SHEATHING OR AFTER SHEATHING IS COMPLETE, MAKING IT EASIER TO DISTRIBUTE HTB-DEVICES ON ROOF.
- HTB-DEVICES ARE DESIGNED TO FIT WITHIN A STANDARD 16" JOIST LAYOUT. THE ROUGH OPENINGS ARE TO BE 14 1/2"x14 1/2".
 - SUPPORTS (BEAMS, TRUSSES) FOR THE HTB-DEVICE ARE TO BE DESIGNED BY EOR.
- INSTALL MINIMUM 4X BLOCKING EA. END OF HTB-DEVICE BETWEEN STRUCTURAL MEMBERS. PROVIDE 2X BLK'G MINIMUM 2 BAYS EA. DIRECTION FROM 4X BLOCKING AT HTB-DEVICE.
- SET HTB-DEVICE IN THE OPENING. MAKE SURE THAT THE EYE ON TOP OF THE DEVICE IS PERPENDICULAR TO THE OUTSIDE WALLS. FASTEN THE SKIRTS WITH SDS 3" X 1/4" OR 7/8" THRU-BOLTS PER SCHEDULE. HOLES ARE PROVIDED IN THE SKIRTS IN BOLT LOCATION.
- 5/16" HOLES ARE PROVIDED IN SKIRTS TO ALLOW ATTACHMENT OF STRUCTURAL MEMBERS AND 4X BLOCKING TO HTB DEVICES - USE 1/2"x3" SDS. USE ALL PROVIDED HOLES.



NOTE: PROPERTIES AND DIMENSIONS IN THIS DRAWINGS SHOW HTB-16 INSTALLATION OF HTB-24 AND HTB-32 IS SIMILAR

NOTE
IF SHEATHING IS COMPLETE PRIOR TO SETTING HTB'S, PROVIDE AN 18 3/4" X 18 3/4" OPENING IN PLYWOOD AT HTB LOCATION. THIS WILL ALLOW HTB TO SET DIRECTLY ON STRUCTURAL MEMBERS.

ANY QUESTIONS REGARDING INSTALLATION

CALL: GARY HARDY 1 (805) 404-5196 ANCHOR TESTING SHALL BE CONDUCTED BY QUALIFIED PERSONNEL UNDER THE SUPERVISION OF A PROFESSIONAL ENGINEER IN ACCORDANCE WITH THE CALIFORNIA CODE OF REGULATIONS, TITLE 8, SECTION 3296.

RECOMMENDATIONS

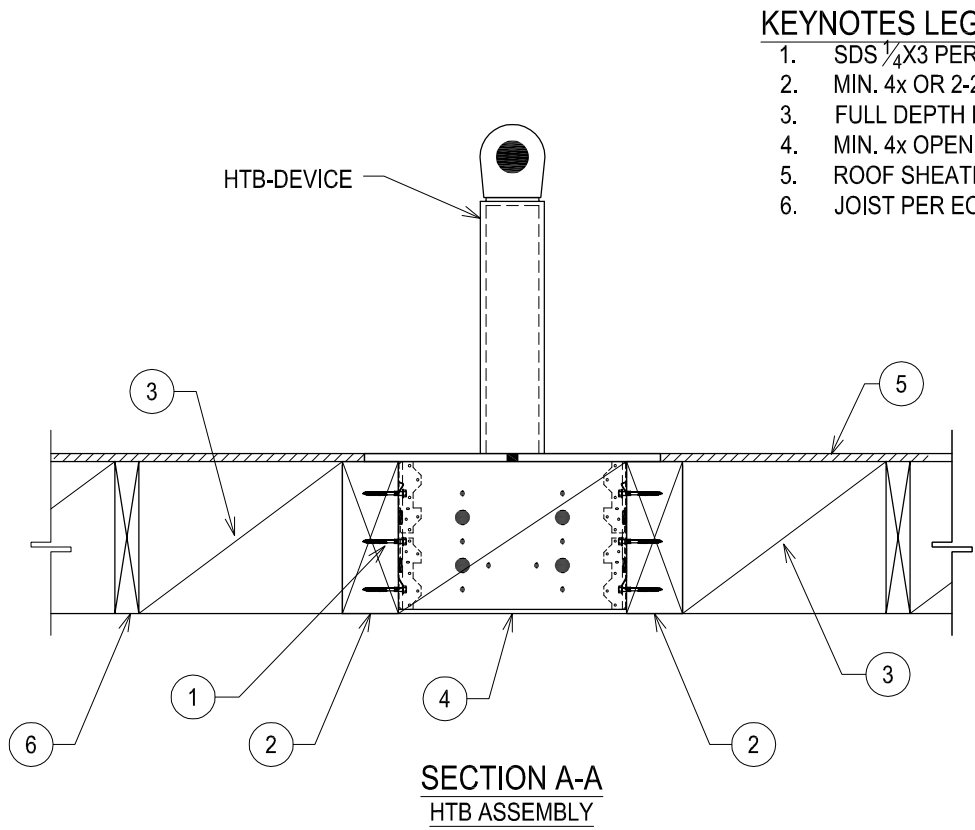
- DESIGN OF STRUCTURAL MEMBERS PER EOR.
- STRUCTURAL SUPPORT ATTACHED TO TRUSSES TO BE DESIGNED BY EOR AND SHOULD HAVE ENOUGH LENGTH AND FASTENERS TO THE TRUSS TO ALLOW FOR FULL TRANSFER OF FORCES TO THE TRUSSES
- STRUCTURAL SUPPORT ATTACHED TO THE TRUSS IS RECOMMENDED TO BE OF ENGINEERED WOOD TO MINIMIZE SPLITTING

- NOTE:
- HARDY TIE BACK ANCHOR FABRICATOR IS TOBIN STEEL. LA CITY FABRICATOR LICENSE #975 ICC-ESR 1822. IAPMO ER# 461
 - HARDY TIE BACK ANCHOR DEVICE HAS BEEN TESTED BY CERTIFIED TESTING AGENCY TO MEET OR EXCEED OSHA AND CALOSHA REQUIREMENTS.
 - HARDY TIE BACK ANCHOR REQUIRES A ROUGH OPENING OF 14 1/2" x 14 1/2".



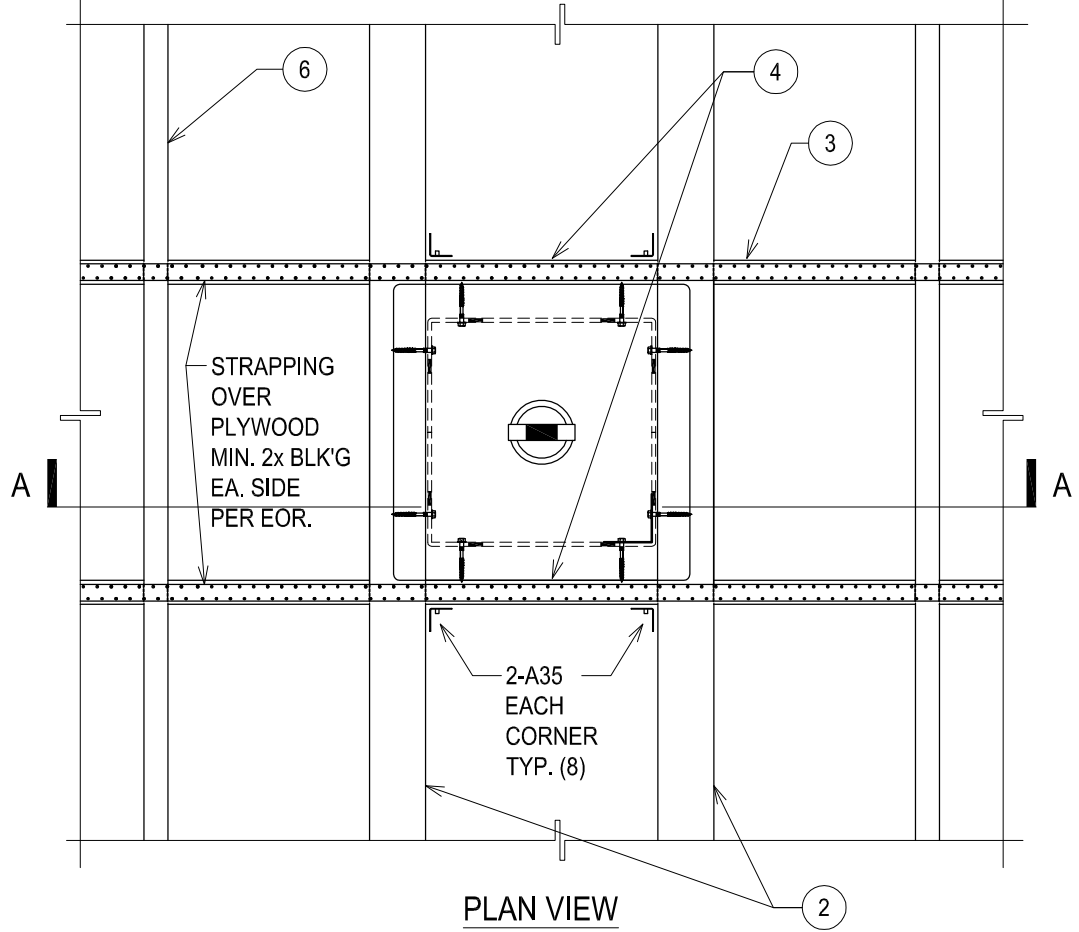
IAPMO ER# 461

2020 L.A. CITY RESIDENTIAL CODE (LARC)
2020 L.A. CITY BUILDING CODE (LABC)

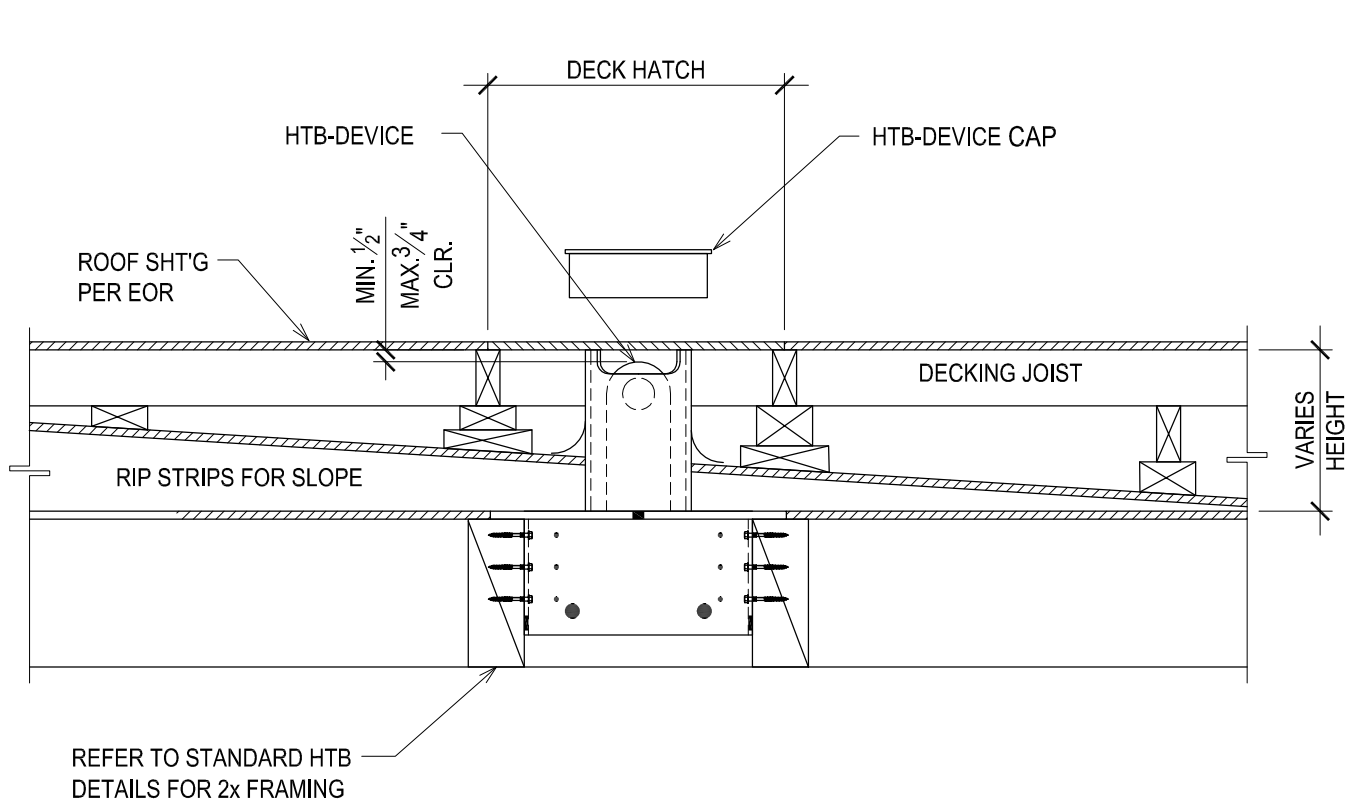


KEYNOTES LEGEND

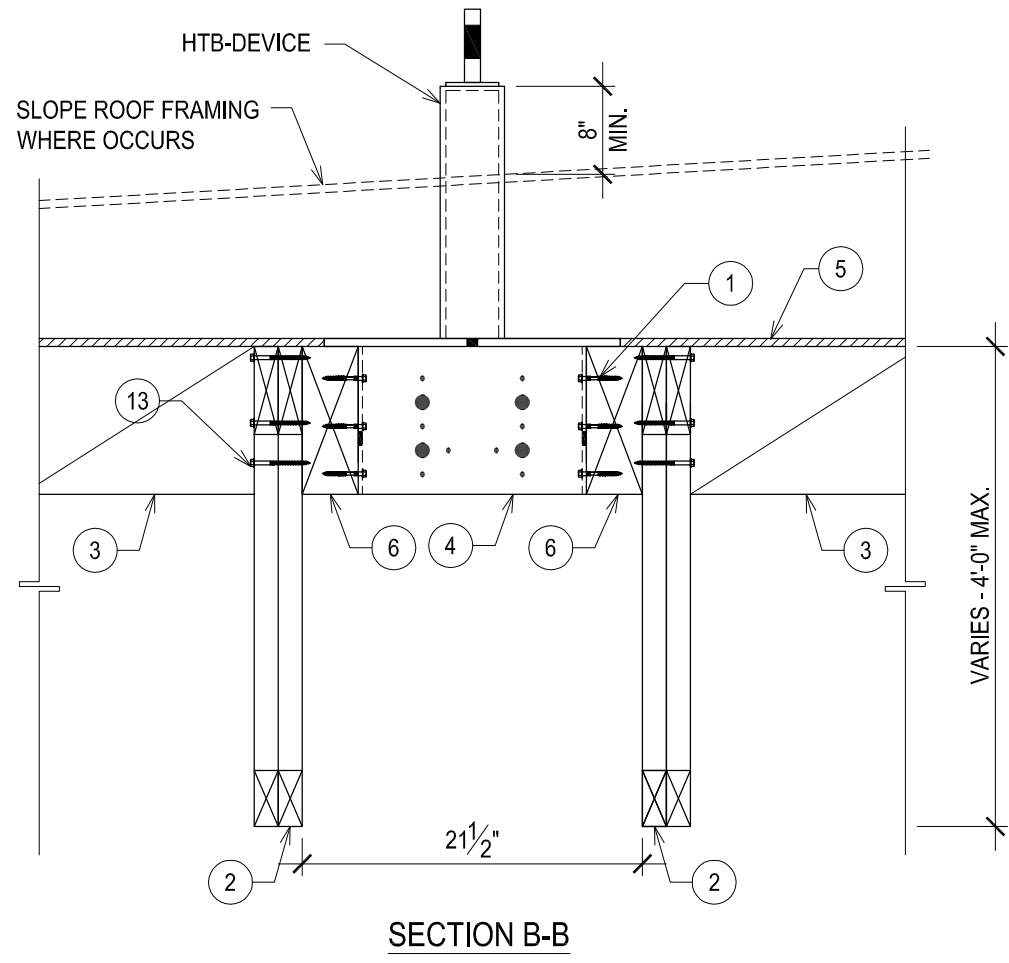
- SDS 1/2"x3" PER SCHEDULE.
- MIN. 4x OR 2x2 STRUCT. SUPPORT BY EOR.
- FULL DEPTH MIN. 2x BLK'G
- MIN. 4x OPENING BLK'G
- ROOF SHEATHING PER EOR
- JOIST PER EOR



HTB LAYOUT DETAIL W/ 2x FRAMING 4

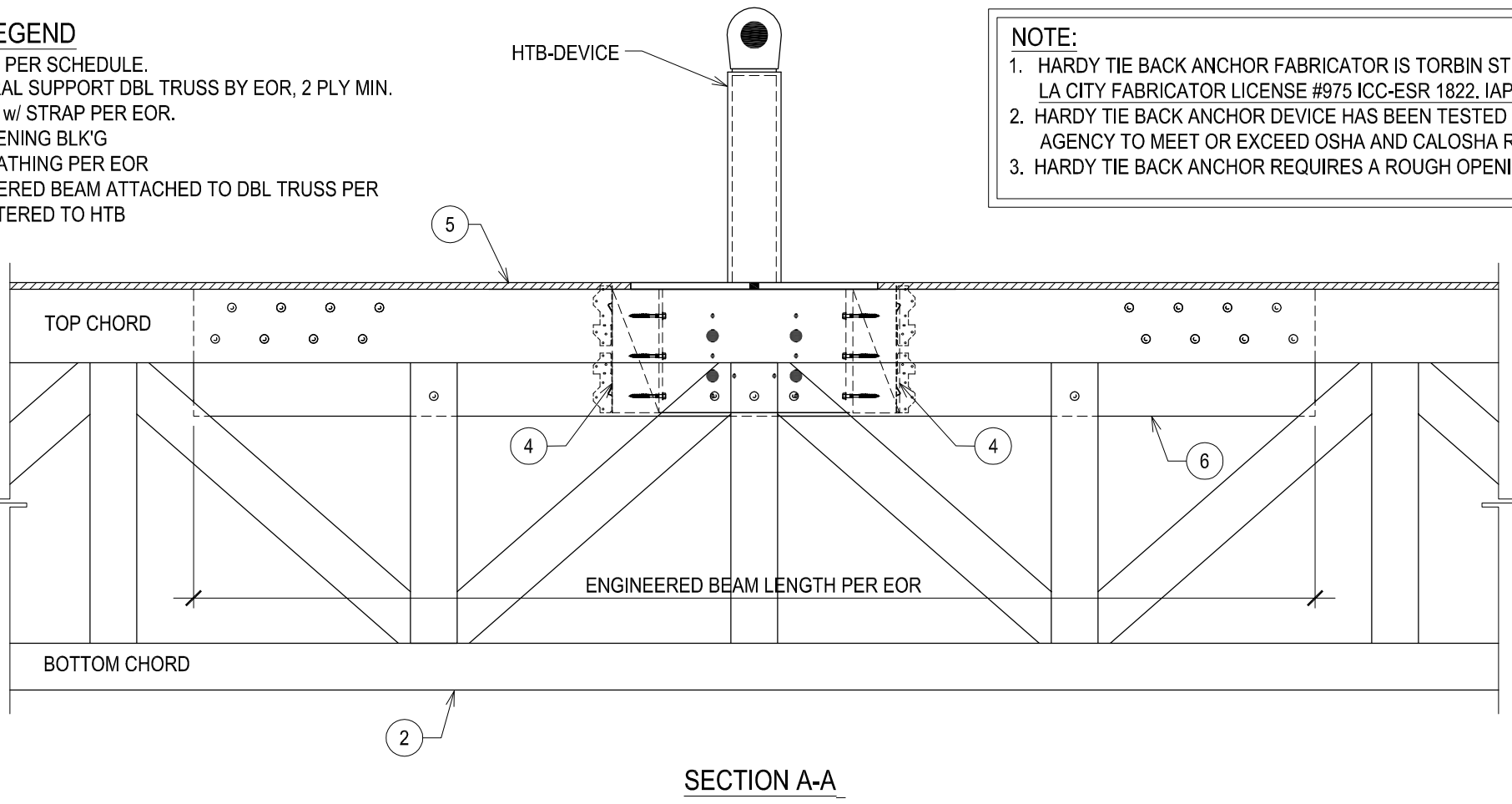


HTB-CM LAYOUT ON BLW ROOF DECK ABV RIP STOPS 3



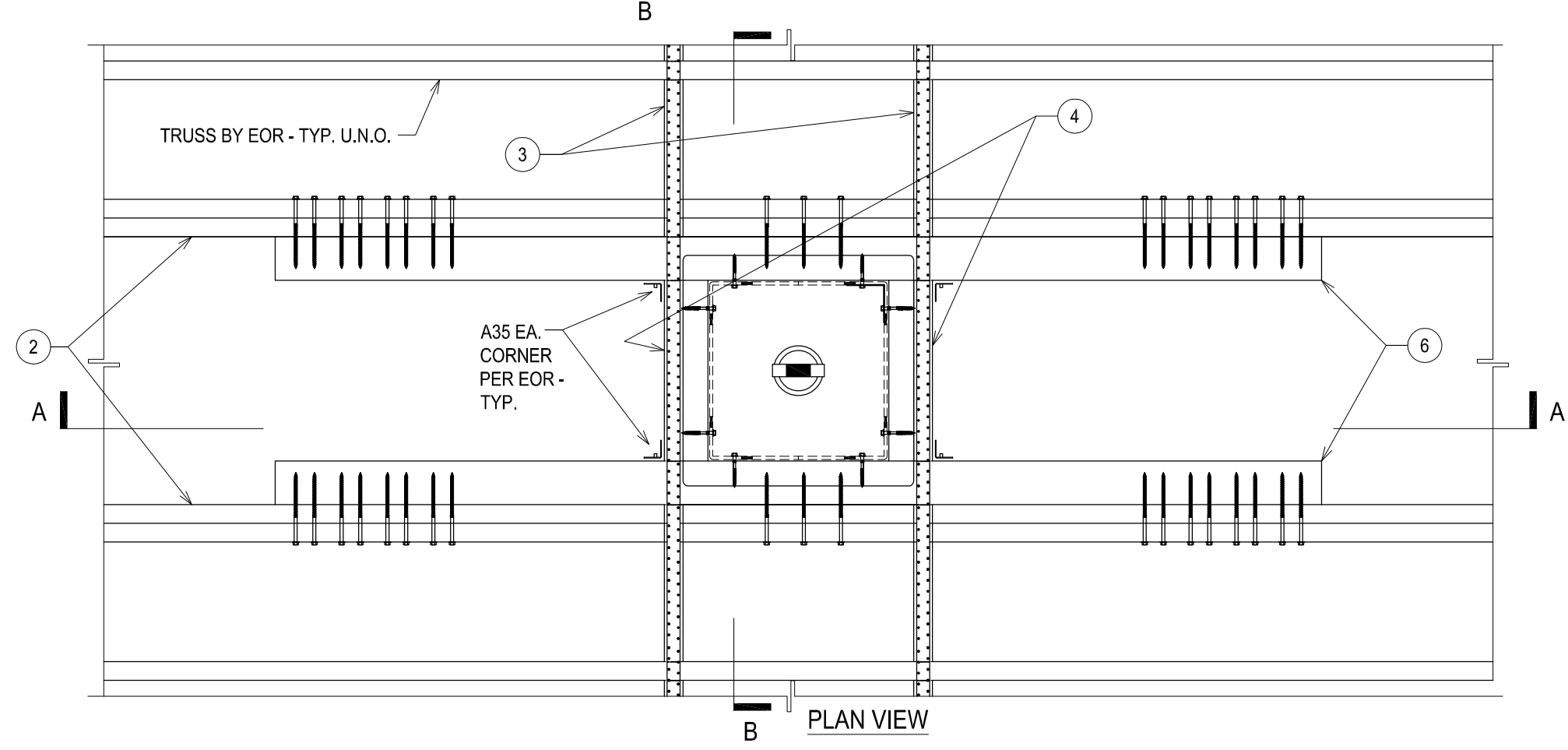
KEYNOTES LEGEND

- SDS 1/2"x3" PER SCHEDULE.
- STRUCTURAL SUPPORT DBL TRUSS BY EOR, 2 PLY MIN.
- 2x10 BLK'G w/ STRAP PER EOR.
- MIN. 4x OPENING BLK'G
- ROOF SHEATHING PER EOR
- 4x ENGINEERED BEAM ATTACHED TO DBL TRUSS PER EOR - CENTERED TO HTB

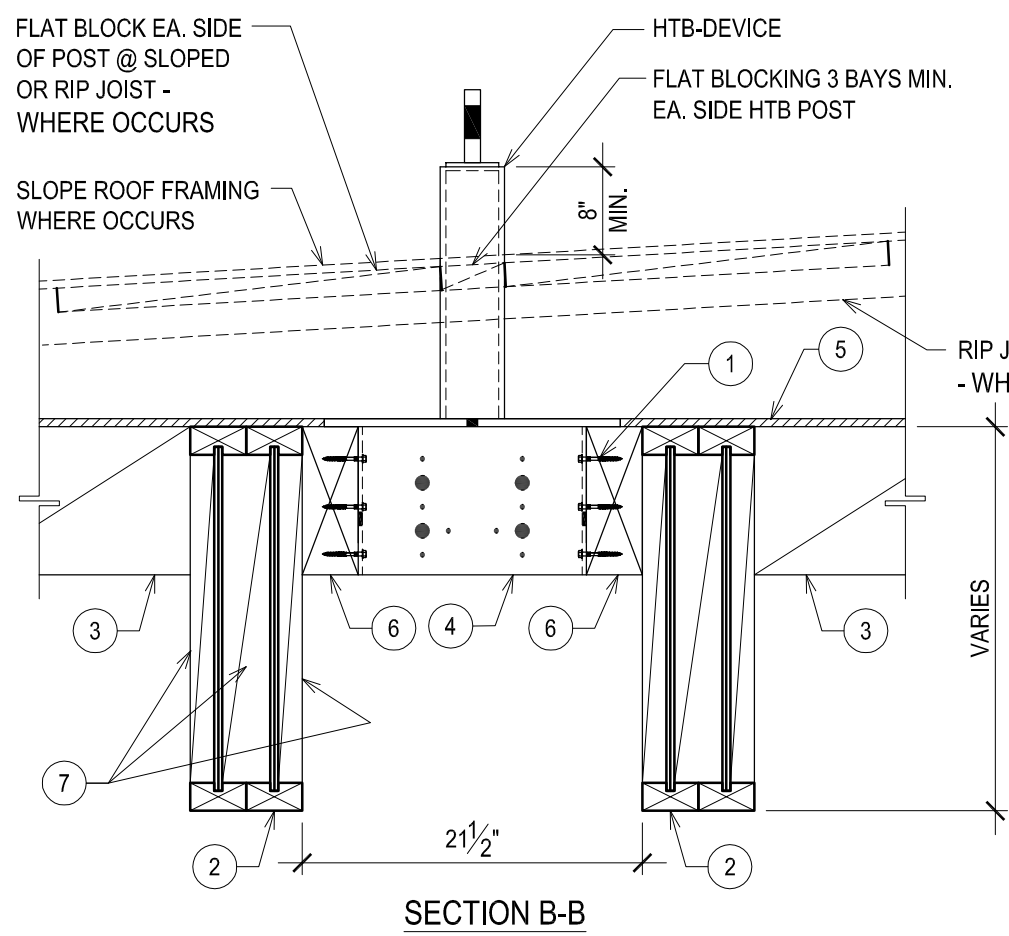


NOTE:

- HARDY TIE BACK ANCHOR FABRICATOR IS TORBIN STEEL. LA CITY FABRICATOR LICENSE #975 ICC-ESR 1822. IAPMO ER# 461
- HARDY TIE BACK ANCHOR DEVICE HAS BEEN TESTED BY CERTIFIED TESTING AGENCY TO MEET OR EXCEED OSHA AND CALOSHA REQUIREMENTS.
- HARDY TIE BACK ANCHOR REQUIRES A ROUGH OPENING OF 14 1/2" x 14 1/2".

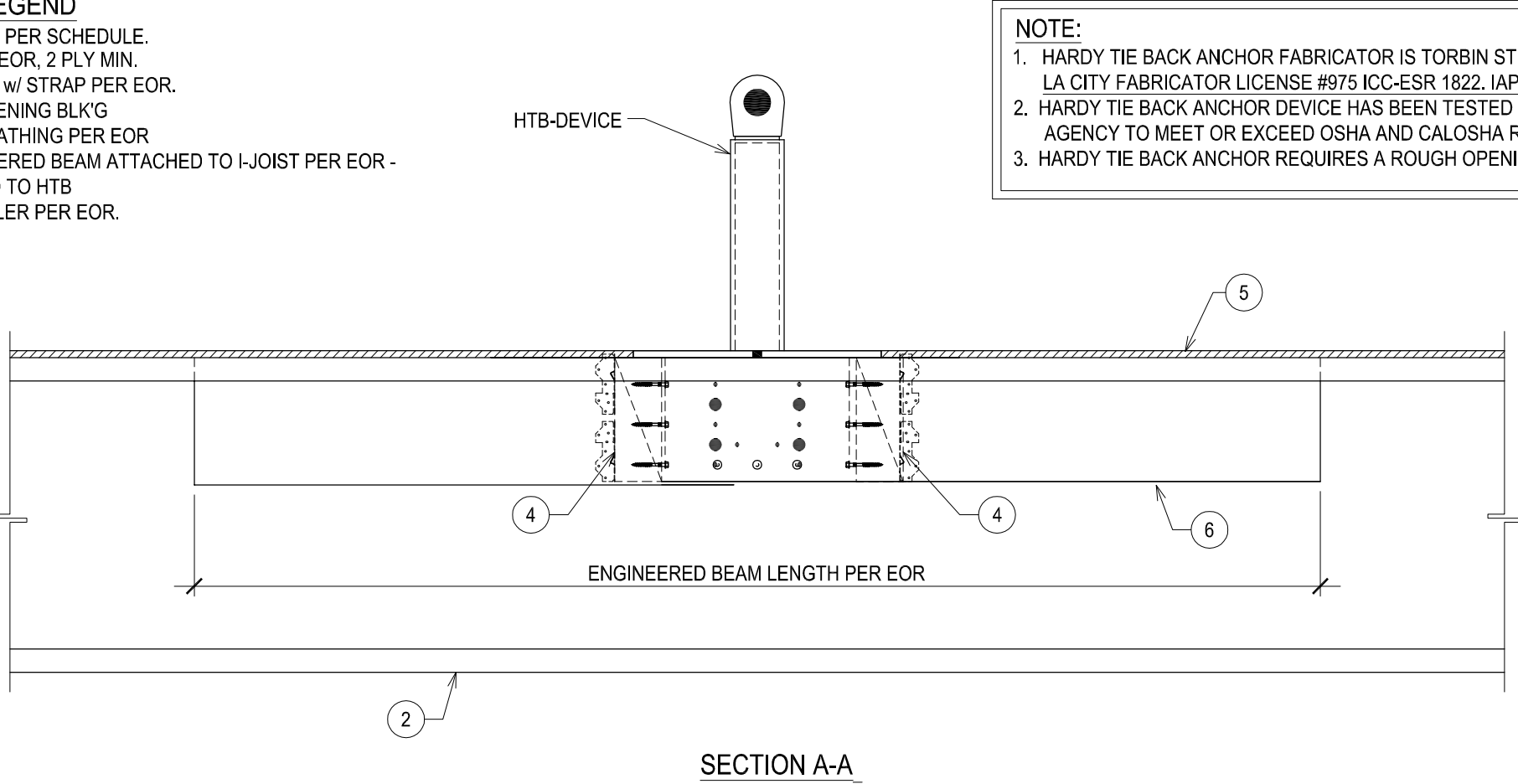


HTB LAYOUT DETAIL W/ WOOD TRUSS 2



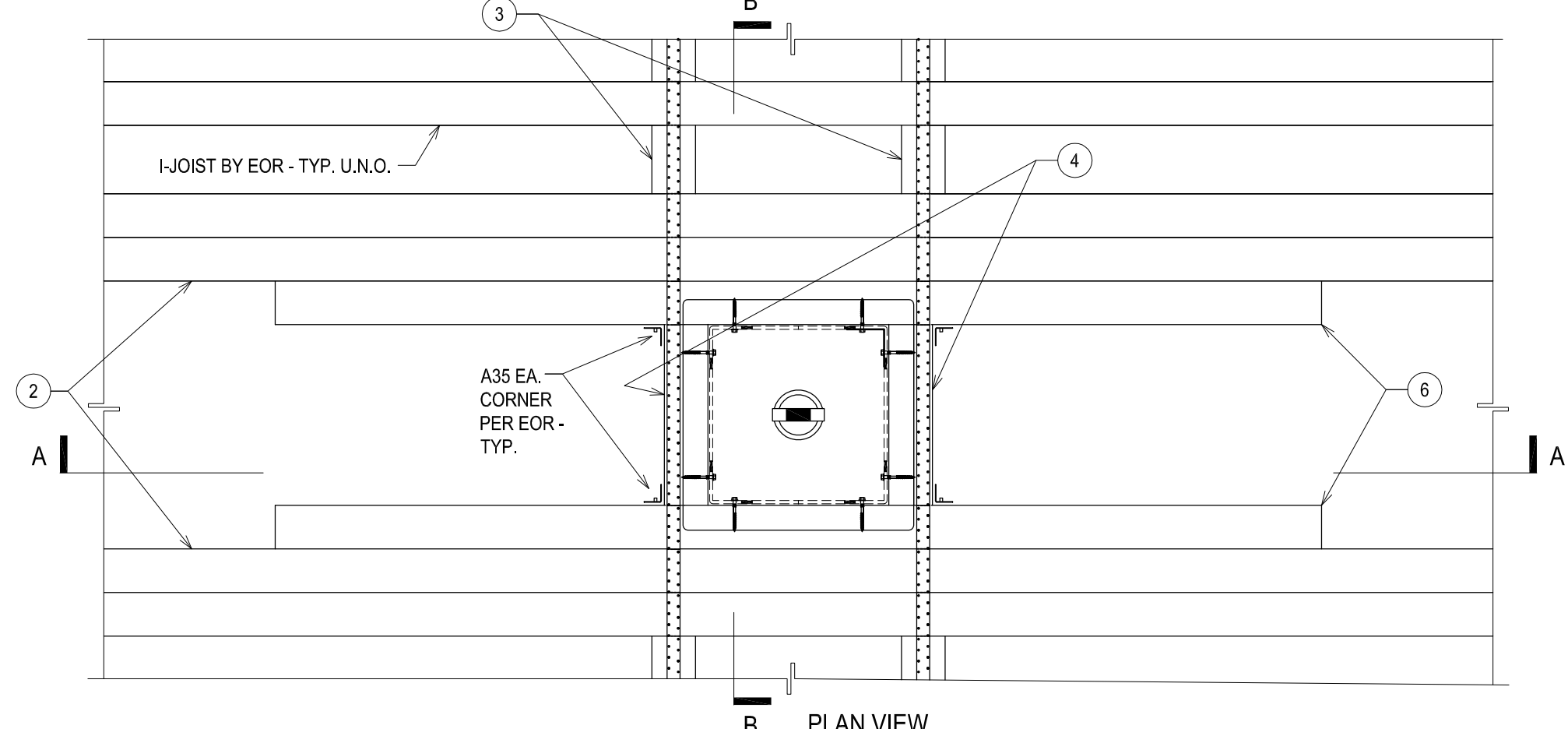
KEYNOTES LEGEND

- SDS 1/2"x3" PER SCHEDULE.
- I-JOIST BY EOR, 2 PLY MIN.
- 4x10 BLK'G w/ STRAP PER EOR.
- MIN. 4x OPENING BLK'G
- ROOF SHEATHING PER EOR
- 4x ENGINEERED BEAM ATTACHED TO I-JOIST PER EOR - CENTERED TO HTB
- I-JOIST FILLER PER EOR.



NOTE:

- HARDY TIE BACK ANCHOR FABRICATOR IS TORBIN STEEL. LA CITY FABRICATOR LICENSE #975 ICC-ESR 1822. IAPMO ER# 461
- HARDY TIE BACK ANCHOR DEVICE HAS BEEN TESTED BY CERTIFIED TESTING AGENCY TO MEET OR EXCEED OSHA AND CALOSHA REQUIREMENTS.
- HARDY TIE BACK ANCHOR REQUIRES A ROUGH OPENING OF 14 1/2" x 14 1/2".



HTB LAYOUT DETAIL W/ I-JOIST 1

HARDY TIE BACK
ANCHOR DEVICE
HTB DETAIL SHEET



ISSUE/REVISION	DATE

JOB NO. ---

SCALE: NOT TO SCALE

DATE: SEPTEMBER 8, 2020

DRAWING NUMBER

HTB

1 07 1